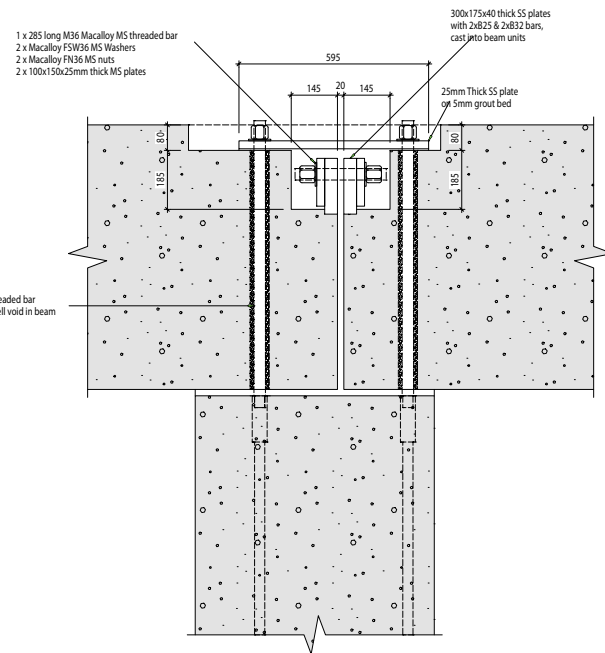
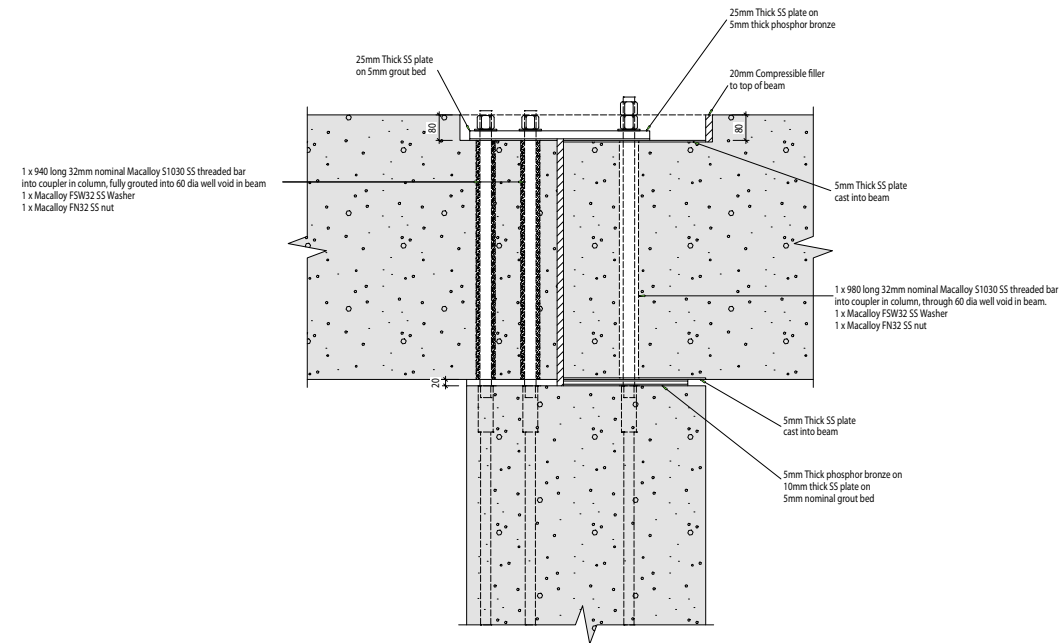


RAMBOLL TO CONFIRM BOLT  
CONFIGURATION TO WORK  
WITH SUGGESTED DETAIL



Section A-A  
Beam/Column Connection

RAMBOLL TO CONFIRM BOLT  
CONFIGURATION TO WORK  
WITH SUGGESTED DETAIL



Section B-B  
Beam/Column Connection  
At Movement Joint