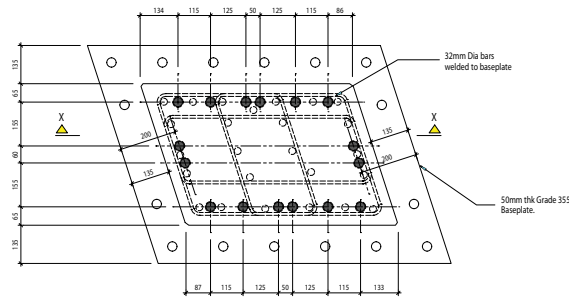
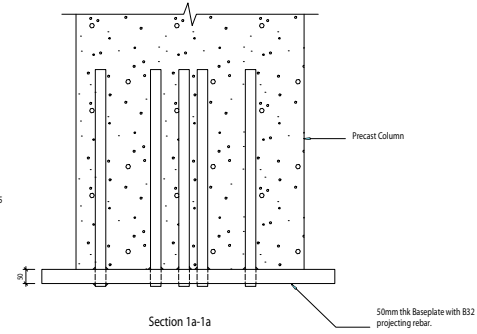


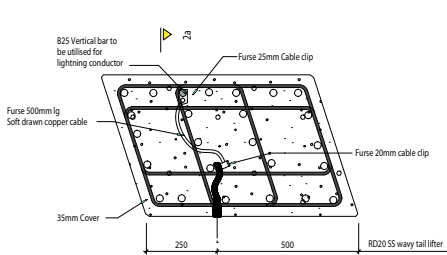
Typical section through column



Section 1
Plan on Baseplate

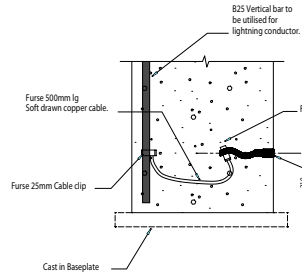


Section 1a-1a

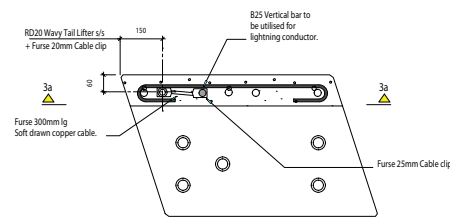


Section 2
Lightning Conductor
Column Base Location

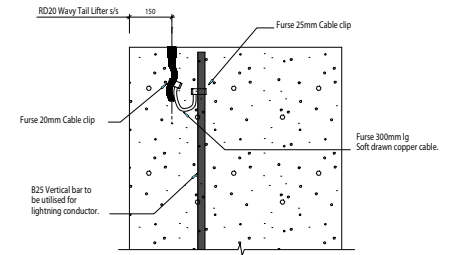
NOTE:
Lightning conductor clips must
be used on same vertical rebar
to top & btm of Column



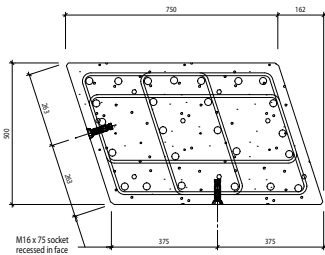
Section 2a-2a



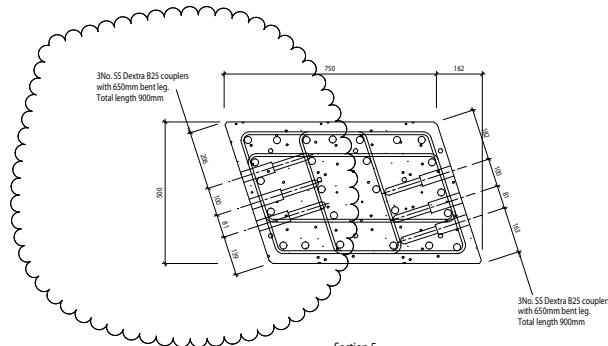
Section 3
Lightning Conductor
Column Top Location



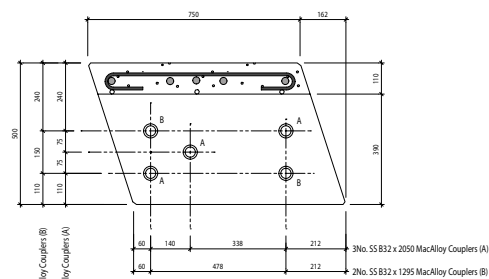
Section 3a-3a



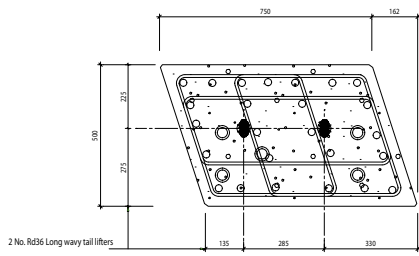
Section 4
Propping socket setting out



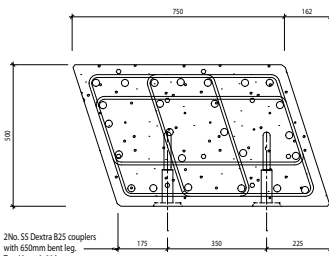
Section 5
Dextra coupler setting out



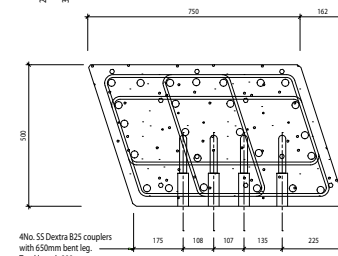
Section 6
MacAlloy coupler setting out



Section 7
Rd36 Wavy tail lifter setting out



Section 8
Dextra coupler setting out



Section 9
Dextra coupler setting out